

MODEL SCU-8

STRAPPING SOLUTIONS FOR THE CORRUGATED INDUSTRY

FEATURES

- Reliable high speed strapping heads
- Extremely fast cycle time
- Rugged Steel Construction
- Simple strap feed from side of the machine
- Pallet void feeding assemblies available as an option
- Two, three and four head configurations
- Control-reliable electrical design
- Arc-flash compliant



**Panel shown differs from standard panel supplied.*

MODEL SCU-8

STRAPPING SOLUTIONS FOR THE CORRUGATED INDUSTRY



Samuel VK20 Strapping Head

- Simple rugged 3 phase AC motor direct drive
- No clutches, belts or chains
- Fewest wearing parts in the industry
- Extremely reliable heat-seal technology
- Pivoting head mount to allow quick 'in-platen' cleaning

Long-life, efficient, strap track

- Rugged stainless steel flappers
- Fully enclosed corners for reliable strap feed



**Panel shown differs from standard panel supplied.*



What makes the SCU-8 stand out from the others?

Modern Control-Reliable Design

- Allen Bradley Compact Logix PLC c/w Ethernet connectivity
- Externally-located programming port, and tension adjustment
- Standard OEM controls
- Redundant safety relay contacts for control-reliable design

Optional Turntable

- Machined from steel billets
- Hydraulically actuated
- Integrated strap track sections
- Rotates 90 degrees and recesses for high-speed operation cross-strapping



MODEL SCU-8

STRAPPING SOLUTIONS FOR THE CORRUGATED INDUSTRY

Experience the difference Samuel Strapping Systems can make in your productivity:

The SCU-8 uses high performance heads and components to produce securely unitized corrugated loads to meet your specific requirements.

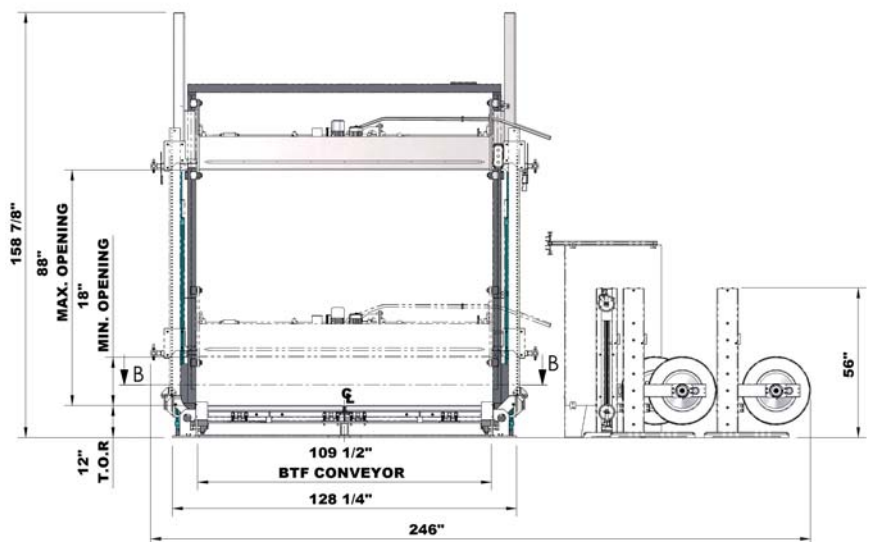
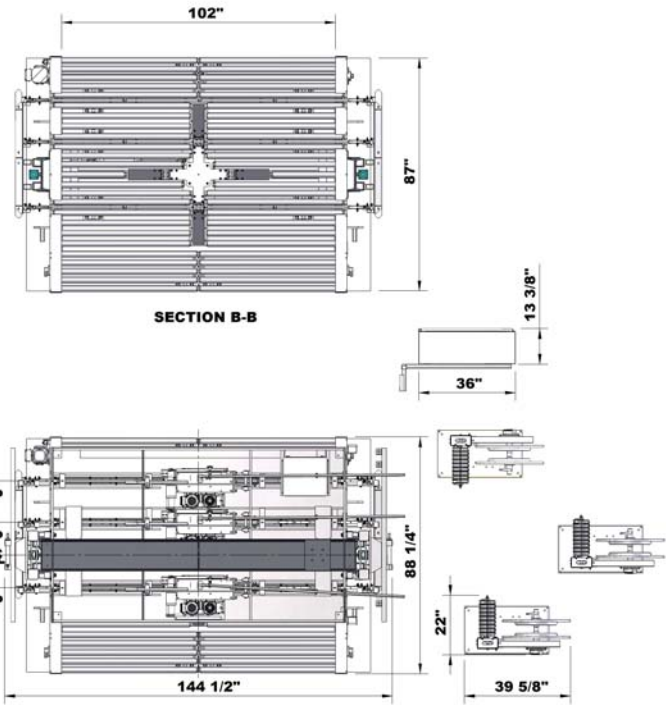
The SCU-8's framework is built from structural steel to withstand a lifetime of use in demanding plant environments. The heavy steel platen and reinforced under conveyor supports allow high compression forces on corrugated loads.

Our standard model offers compression up to 8,000 lbs, with higher levels available as an option. The SCU-8 comes equipped with the VK20 strapping head, which offers you the flexibility to use polyester or polypropylene strap in a variety of widths and gauges.

The user-friendly programmable controllers are state-of-the-art and provide an O.E.M. system suitable for interfacing with any standard conveyor equipment.

Specifications

Max. Load Height	80" or 88"
Min. Load Height	10" or 18" (with optional Pallet Void feeders the minimum height is 18")
Max. Load Width	102"
Min. Load Width	24"
Through Clearance	102"
Compression	1,000 to 8,000 lbs. Range (Higher levels optional)
Compression Sys.	Hydraulic
Maximum Diagonal	102"
Package Dimension	87" L x 102"W
Roller Conveyor	Tangentially driven rollers for fast and easy removal
Head Spacing	15" and 24"
Machine Height	127"
Machine Width	87"



SCU-8-05/12-100448